



## **WALK 10: BELLADRUM**

**Distance:** 5km

**Time:** 1 hour 10 minutes

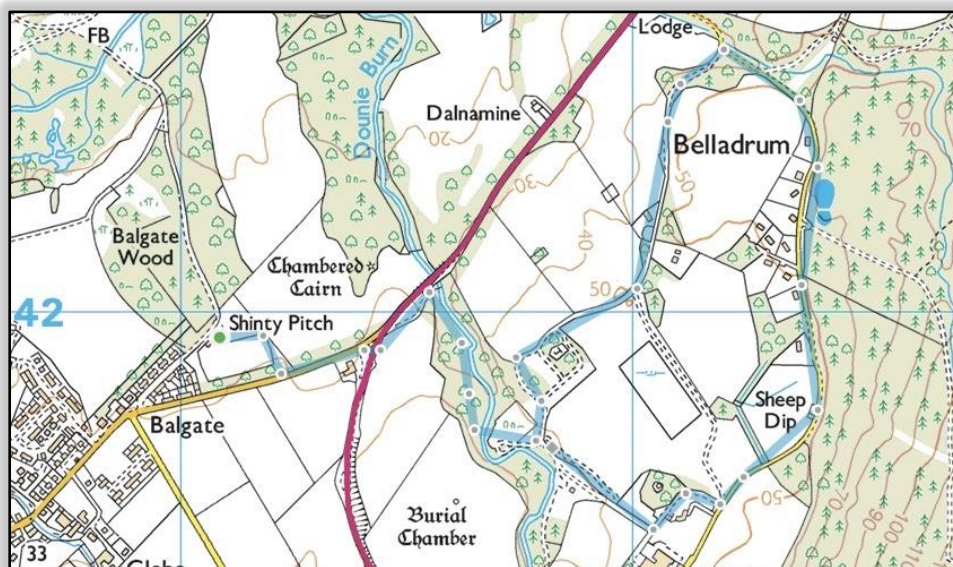
**Ascent:** 39m

**Map:** OS Explorer 431

**Terrain:** Well-maintained footpaths and tracks with a section on a minor tarred road

**Start Point:** Kiltarlity Shinty Club - 411519

*A great and varied walk taking in the gorgeous Belladrum Estate*



### **STEP 1**

Start the walk from the Kiltarlity Shinty Club, where there is a large car park with ample car parking space. Walk past the shinty clubhouse and around the bottom side of the shinty pitch to join the main road into Kiltarlity, Allarburn Drive. Once at the road, turn left following the pavement to head out of Kiltarlity. Cross the road at Brockies Lodge, walking through the car park, and then take care to cross the main A833 road aiming for a metal gate on the other side (pictured on the right).





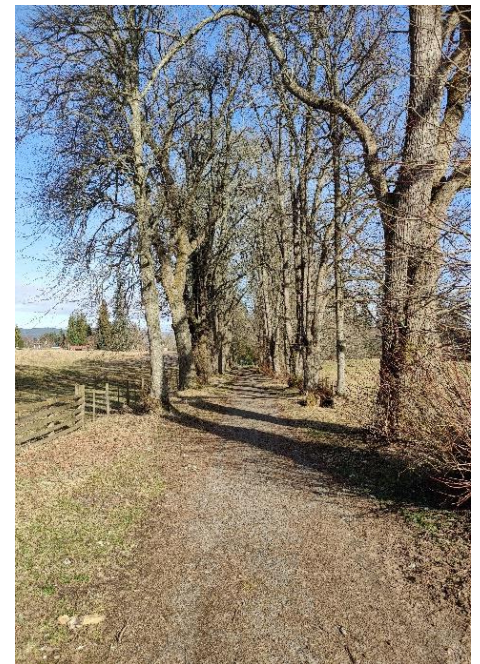
## **STEP 2**

Once through the gate, turn left following a large track running parallel to the A833. Follow the track for around 200 metres, then take the first track to the right, just before reaching a river and an old bridge. The track follows the pleasant river for 200 metres, passing by Belladrum Festival's 'Old West Town' on the right, before crossing a bridge over the river. Right after the bridge, ignore a track directly to the left and instead take the track heading steeply uphill.



## **STEP 3**

Follow this track for 1km, soon passing the site where the old grand Belladrum house once stood on the right, while enjoying the pleasant rural scenery and great views to the north. Turn right at the minor tarred B road. After 1.2km take care to turn right off the road onto a track, next to a wooden house, signposted as a 'private road'.



## **STEP 4**

Follow the track for a few hundred metres. It may be worthwhile for a very small detour, taking the first track on the right to see the quaint small circular church of Belladrum and then retracing your steps back to the main track. If not, continue on the track, soon walking parallel to a large stone wall on the left, where a private garden lies behind. Turn right onto a track opposite a gate to the private garden and follow for a few hundred metres down a beautiful, wooded avenue. Near the end of the avenue, turn right through a metal gate and follow a large faint path, soon passing by what looks like the remains of tower on the left.



## **STEP 5**

Shortly after passing the ruins, pass through another metal gate and take the track heading directly through the old garden, which is now the location of the main stage for the Belladrum Tartan Heart Festival. Once through the old garden, turn left and retrace your steps back over the bridge and all the way back to the start point at the Shinty club.

